

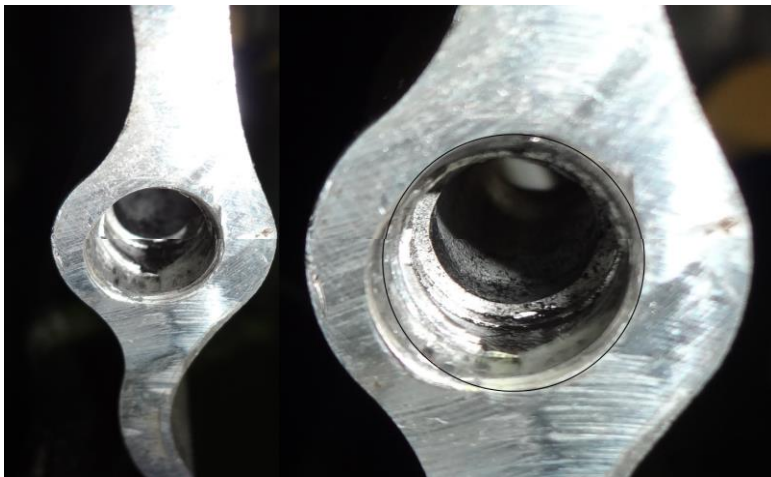
NAVARA D40 DISENGAGING 5TH GEAR

Nissan Navara D40 2.5L YD25DDTI 2005-

After a clutch replacement or gearbox having been removed and refitted from the vehicle the driver may experience a condition in which the gear selector “jumps” out of 5th gear.

If this condition occurs the most common cause is due to gearbox misalignment. Often due to the weight of the transfer case. This misalignment can cause the input shaft and clutch plate assembly to induce a harmonic that will see the 5th gear synchronizer sleeve move away from the gear set and shift out of 5th gear.

To check for this the gearbox will have to be removed. Inspection of the dowels and locating holes used to position the bell housing to the rear of the engine should show evidence of misalignment as per the image below.



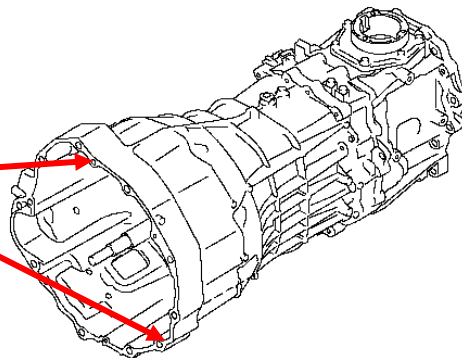
If misalignment has occurred it is recommended that the dowels are replaced and damage to the locating holes cleaned up as best as possible.

Care must be taken to ensure that driveline alignment is correct at all times during installation and the bell housing bolts are tightened evenly.

Should the issue persist after reinstallation check for signs of wear or fault in the gear selector mechanism and/or check for fault internally within the transmission ie worn gear set and/or faulty/worn detent.

Dowel locations

(may vary by transmission)



PERTH - Head Office
20 Oxleigh Drive
Malaga, WA, 6090

SYDNEY
132 Gipps Road
Smithfield, NSW, 2164

30 Neill Street
Sumner, QLD, 4074

29-33 Hodge Drive
Dandenong, VIC, 3175

1300 720 728 - www.cbaus.com.au

POWERDRIVE IS A PROUD TRADEMARK OF CLUTCH AND BRAKE AUSTRALIA PTY LTD