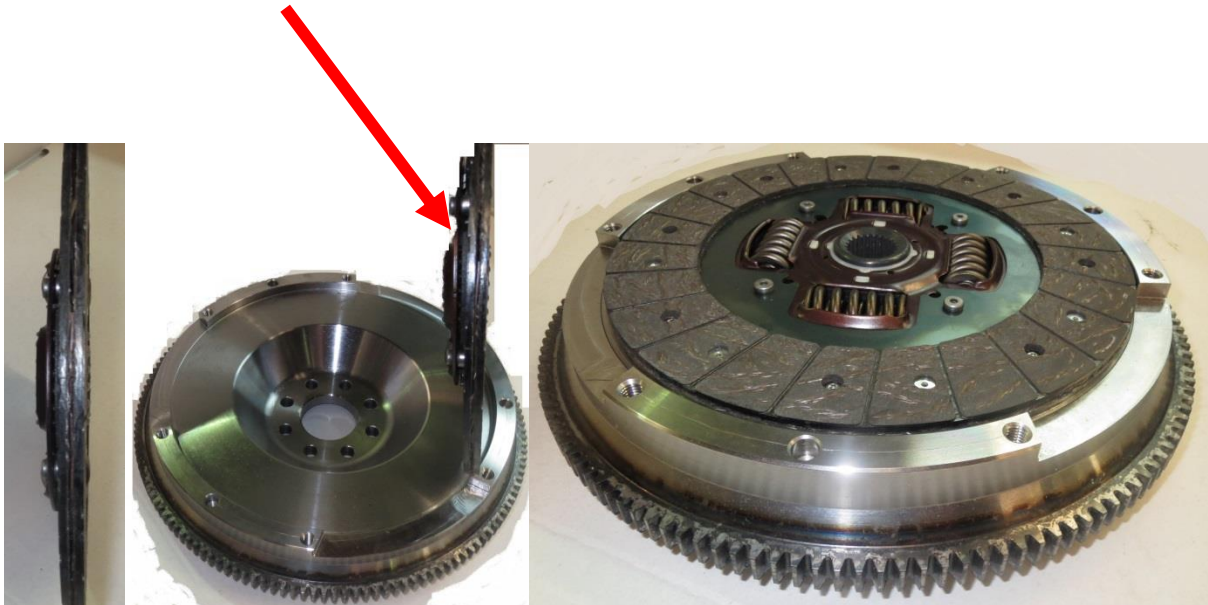


CLUTCH DISC ORIENTATION

THE CLUTCH DISC ORIENTATION HAS CHANGED FOR THE
INSTALLATION OF THIS CLUTCH KIT

Please make sure that you assemble the clutch with the proud
sprung side of the disc towards the flywheel.



This is a design feature and failure to adhere to this can cause
the disc to not release in operation.